

## **How does your saddle interact with your horse?**

Here at Wright and Morten we strongly believe in a whole-horse approach any concerns you may have about your horse. From poor performance cases to horse's under-going a period of rehabilitation or even those without a specific issue, our new pressure saddle pad is a brilliant addition to our tool-kit.

### **What is a pressure saddle pad and how does it work?**

The pressure pad is a lightweight pad which is placed between the saddle and the horses back. The pad has over 900 sensors to allow an accurate representation of pressure distribution from front to back and left to right along with spinal clearance. This allows us to investigate how a saddle and also then a rider interacts with the horses back in real time. Assessment is often done with and without a rider for comparison.



### **Case study – Bertie**

The aim of this session was to alter the way the saddle interacted with the horses back, as a short-term solution between saddle fitting sessions. Bertie is a young sports horse who was showing signs of discomfort when ridden. Using the Stride harmony pressure saddle pad we were able to investigate the pressure applied to Bertie's back. The saddle presented to have almost 50/50 pressure from left to right, however there is a marked imbalance from the pressure at front of the saddle to back, this can be seen in figure 1 in a pie chart and figure 2 in a pressure distribution map.



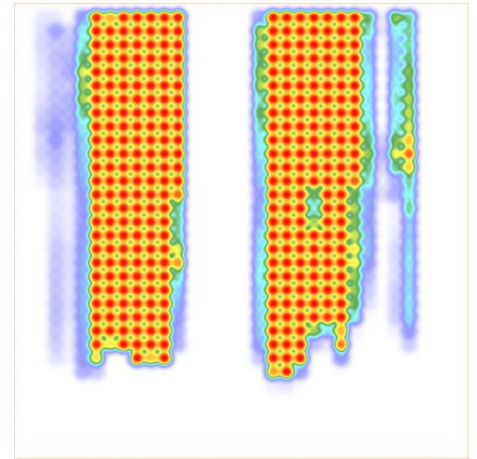
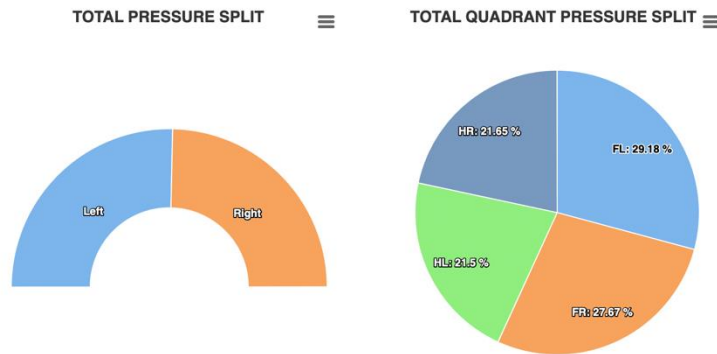


Figure 1: Saddle pressure distribution displayed in pie charts

Figure 2: Saddle pressure distribution map

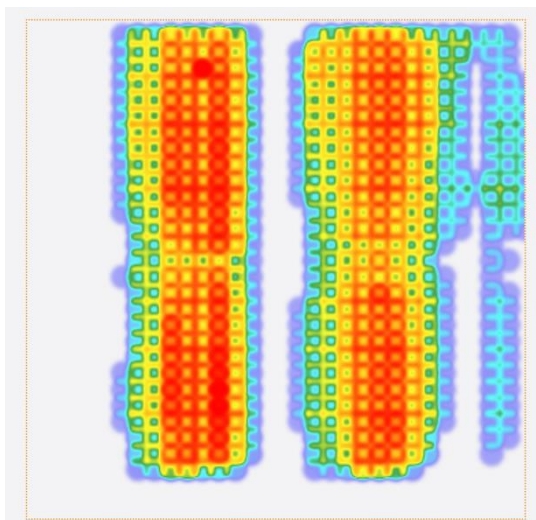


Figure 3: Bridging saddle on pressure distribution map.

By taking away all pads and using a much thinner numnah the saddle displayed to have an even pressure on the horses back, this can be seen in figure 4.

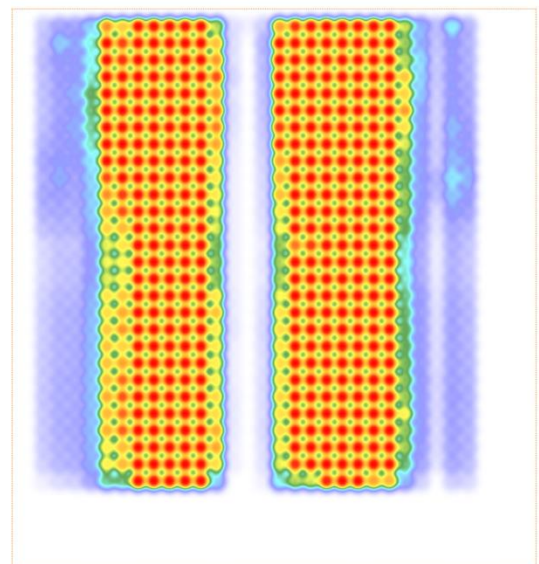


Figure 4: Even pressure seen on the pressure distribution map.

EQUINE CLINICAL DIRECTOR:  
C J Phillips MA Vet MB CertAVP (ESO) MRCVS



**Equine Clinic** Somerford Park | Holmes Chapel Road | Somerford | Cheshire CW12 4SW  
**Tel:** 01260 280800 **Email:** somerford@wmvets.co.uk **Website:** www.wmequinevets.co.uk

Wright & Morten Veterinary Surgeons is a trading name of Independent Vetcare Ltd  
Registered in England No. 07746795 VAT No. 115-1416-58  
Registered Office: The Chocolate Factory, Keynsham, BS31 2AU Tel: 01225 481520  
Authorised and regulated by the Financial Conduct Authority for credit-related regulated activities under reference number FRN738010