



**PET SERVICES**



Kendal 01539 722692  
Kirkby Lonsdale  
015242 71221

*Kendal*

## WESTMORLAND SMALL ANIMAL NEWS

*kirkby lonsdale*

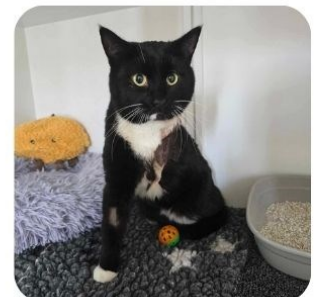
# Summer

Dear readers,  
Finally summer is here, and with that comes our second newsletter of 2025! In this season's edition we will be covering some interesting and important topics including preventative healthcare and summer hazards. This month's staff spotlight features our wonderful receptionist, Nicola. Enjoy!

## Animal Rescue Cumbria

As a practice we work closely with Animal Rescue Cumbria to provide their veterinary care. This involves weekly shelter visits where our vet will examine residents, administer vaccines and diagnose/treat any sick animals. We regularly see Animal Rescue animals in the surgery for neutering, dental procedures and sometimes more complex surgeries (for instance, Napoleon who had his forelimb amputated due to a historical fracture).

If you are interested in supporting Animal Rescue Cumbria, please get in touch with them via their website or give them a call on 01539 824293.





# Get to Know



Nicola has been with Westmorland Vets for 2 years as a receptionist at our Kendal practice. Nicola particularly enjoys meeting and greeting owners with their pets to ensure they have a relaxed and positive experience during their visit.

Outside of work she has over 20 years experience as a dog trainer focusing on basic obedience, behaviour and working gun dogs. Nicola has 6 dogs of her own which she takes for long walks in the surrounding countryside where she lives. Her hobbies include reading and going to the gym.

## ATOPY



Atopy (also known as canine atopic dermatitis) is an allergic skin condition that can lead to itching, redness, hair loss, rough skin and even infections. It is a lifelong condition and usually there is no cure, only management options. It affects at least 10% of dogs and is thought to be the most common cause of long-term itching.

Some breeds are more susceptible to becoming atopic. These include; West Highland White Terriers, Labradors and Golden Retrievers, Springer Spaniels, Vizlas, Basset Hounds, Shar Peis, French Bulldogs and many others.

Causes of atopy:

Studies show that roughly 50% of dogs born to atopic parents will develop the disease themselves. This suggests that the disease arises from interactions between the environmental allergens **and** the dog's inherited genetics. While the most common allergens are environmental (dust mites, pollens, moulds), food allergies may contribute to clinical signs.

Signs you might see if your dog has atopy:

- Itchy skin that might become red and inflamed.
- Hair loss or changes to the skin texture/colour.
- Ear and/or anal gland issues.

Diagnosing atopy can be a challenge and it is usually a diagnosis of exclusion - meaning other things have to be ruled out first! Itchiness can be very uncomfortable and distressing so it is important to get in touch if you think your dog is showing any signs of atopy.

Ref: University of Nottingham Itchy Dog Project



# Preventative healthcare

Preventative healthcare forms a huge proportion of what we do every day as vets and nurses. Read on to find out what this entails and how you could save money by joining our Lifetime Care Club.

## Vaccinations

We vaccinate routinely against the following diseases:

### DOGS:

Distemper virus  
Adenovirus (hepatitis)  
Parvovirus  
Leptospirosis



### CATS:

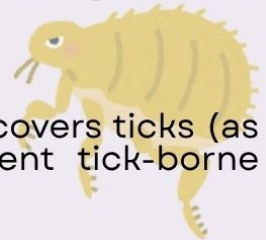
Calicivirus  
Herpes virus  
Panleucopenia virus  
Leukaemia virus

## Dental disease

We examine teeth at every health check we perform. This is to ensure that we pick up on periodontal disease early and we can formulate a plan to prevent it getting worse. This may involve booking in for a dental assessment under anaesthetic.

## Parasite treatment

We recommend using an ectoparasite treatment that covers ticks (as well as fleas and mites). This is important to prevent tick-borne diseases such as Lyme's disease.



We also suggest treating your dogs and cats for worms e.g. roundworms and tapeworms. The usual interval for dosing is every three months, but this may be adjusted dependent on lifestyle and age.

These treatments come in a variety of formulations so please speak to our Vets if you or your pet have a certain preference.

It is especially important to treat both ecto and endoparasites, especially following an infestation, as fleas can transmit tapeworm larvae to dogs and cats.

<p>Cats</p>  <p>£17 per month £204 per year   save up to 37%</p>	<p>Small Dogs 0-10kg</p>  <p>£17 per month £204 per year   save up to 40%</p>
<p>Medium Dogs 10-25kg</p>  <p>£18 per month £216 per year   save up to 42%</p>	<p>Large Dogs 25-40kg</p>  <p>£20 per month £240 per year   save up to 45%</p>

Join our Lifetime Care Club and save up to 45% on preventative healthcare!

### Benefits include:

Annual vaccinations  
10% off Kennel Cough and rabies vaccinations.  
Quarterly flea, worm and tick treatment (dogs and cats).  
6 monthly check up with a nurse.  
10% off microchipping.  
10% off routine dental treatment.  
10% off Animal Health Certificates.  
Plus many more!

# Seasonal hazards

## Blue green algae

Technically known as cyanobacteria. Found in non-flowing fresh water such as lakes and ponds. This can be highly poisonous and sometimes fatal to dogs. Try to avoid letting your pets drink stagnant water.



## Heat stroke

Make sure you are clued up on the signs of heatstroke and how to prevent it. Remember **'Wet then Vet'** - hose or immerse your dog in cold water THEN transport to the vets (do not use wet towels). If you are in doubt about whether it is too hot to walk your dog - just don't!

## Adder bites

Adders are found most commonly in the following habitats: heathland, moorland, peatland, coastal dunes and cliffs, and chalk downland. If you think your dog has been bitten, seek veterinary treatment immediately.



## BBQs

These can host a plethora of hazards - burns from hot coals, skewers, toxic foods, and corn cobs (a very common cause for blocked intestines!). Keep your furry friends away!