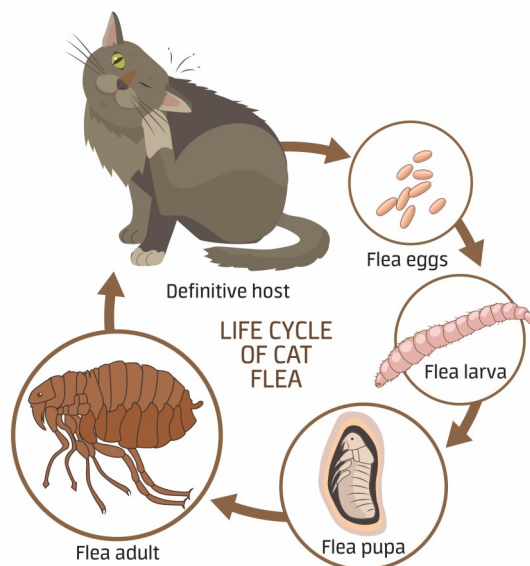


Everyone knows fleas can be a nuisance as well as potentially causing serious health problems and dermatitis. This leaflet provides our recommended advice for preventing and eradicating a flea problem.

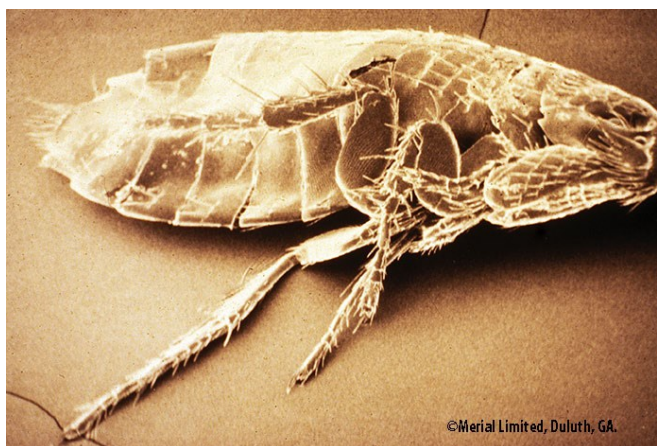
One of the most useful steps is understanding the flea lifecycle. Fleas rarely jump from one pet to another, instead cats and dogs pick them up from infested environments. This could be the garden, the park or any other place where animals with fleas may be found.



- Adult fleas live on your dog or cat and can produce over 50 eggs per day
- Eggs fall off your pet wherever it goes, including the carpet and sofa and even the bed and in the car
- Eggs hatch into larvae which move away from light, deep into carpets or under the sofa or gaps in floorboards
- Larvae spin cocoons and turn into pupae inside. They hatch into adult fleas when they sense warmth, vibration and carbon dioxide on your pet's breath.

Fleas only hatch out when they detect a target such as a cat or dog to jump onto. They can 'hibernate' in this waiting stage for up to 18 months, allowing a flea problem to build up in the home with large numbers of hibernating pupae waiting to hatch out.

One of the most important things to remember is that hibernating pupae are not killed by household sprays—only adults and larvae are killed. Understanding the lifecycle can help us treat the problem.



Fleas on your pet can lay 50 eggs a day each, quickly building up a problem in your home. Because of the flea lifecycle, the fleas you see on your pet are only 5% of the problem, the remaining 95% is eggs, larvae and pupae in the environment. The flea lifecycle is complex and getting rid of them can be time consuming and challenging!

**It can take as little as 21 days for 1 flea to become 1,000!**



**5%**

of a flea problem is on your pet.



**95%**

is in the pet's environment as eggs, larvae and pupae.



## Now for the important bit... How to get rid of them!

### Prevention

Prevention of fleas focuses on regular treatment of your pet to ensure live fleas they pick up while out and about do not survive long enough to lay eggs in your house. Flea products are not designed to be repellent to fleas but to kill them as quickly as possible

We recommend treating cats and dogs monthly with a prescription strength flea product. If you find there are problems such as skin irritation, or in some rare cases where it doesn't work so well, we can offer a variety of alternatives. Some alternatives have different active ingredients so your pet won't react to them. Please talk to us to find what's best for your pet.

**NEW!** New for dogs are tasty/chewy tablets to make it much easier to give. These products also stop any worries about a spot-on getting washed or rubbed off.

Not all flea treatments are suitable for all animals and we can help advise you on the best for your pet.



### Treatment

If you are unfortunate enough to end up with a flea problem in the house, our knowledge of the flea's lifecycle shows that treating and eradicating this problem is the most important part. House treatments usually come in spray form. Just spraying the house is often not enough to reduce the infestation; remember that many fleas will be hibernating pupae which are immune to all products.

To treat the house, the entire house should be thoroughly and extensively hoovered and a kettle boiled in each room. Pay particular attention to under the sofa or beds. This combination of vibration, warmth and humidity helps encourage fleas to hatch out. Using a household flea spray after this is done maximises the effect of the spray

In the event of an infestation, we recommend treating all animals in the house monthly, and performing a thorough house treatment at the same time for each of the three months. Often it will take until the second month before you see a big drop-off in flea numbers.

If your pet is having problems with skin irritation or an allergy to flea bites please come and talk to us and we can help. We are always happy to advise and help with flea treatment and remember that eradication of a problem can take time!

### Take Care with Permethrin!

Over the counter spot-on products containing Permethrin designed for dogs can be lethal to cats. Always check the label and take extra care to follow instructions precisely. Even contact with a correctly treated dog can cause a severe reaction in cats.

Treforest Veterinary Clinic Ltd

16 River Street, Treforest, Pontypridd, CF37 1TD

01443 491 433

[www.treforestvets.com](http://www.treforestvets.com)

Tonypandy Veterinary Clinic

2-3 De Winton Street, Tonypandy, CF40 2QZ

01443 42 12 12