

This factsheet has been prepared to help you understand lens luxation. Whilst it is hoped this factsheet addresses many concerns you may have, please contact us if you have any further questions regarding the condition.

## What is lens luxation?

Lens luxation is the term used for displacement of the lens (the transparent structure within the eye which is responsible for focusing incoming light to the back of the eye). We generally regard lens luxation as an emergency as it can cause the pressure inside the eye to rise, which is painful and may result in irreversible damage to the eye.

## Why does it occur?

We generally distinguish between primary lens luxation and secondary lens luxation.

**Primary lens luxation** – instability of the lens in the absence of other eye disorders, often encountered in terrier breeds.

**Secondary lens luxation** – consequence of other underlying eye disorders (including chronic inflammation in the eye, chronic elevation of the pressure inside the eye, trauma, etc)

## Can both eyes be affected?

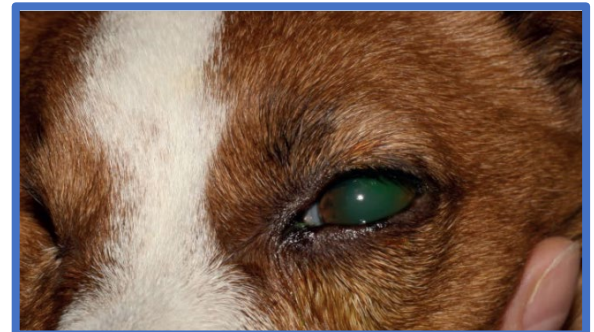
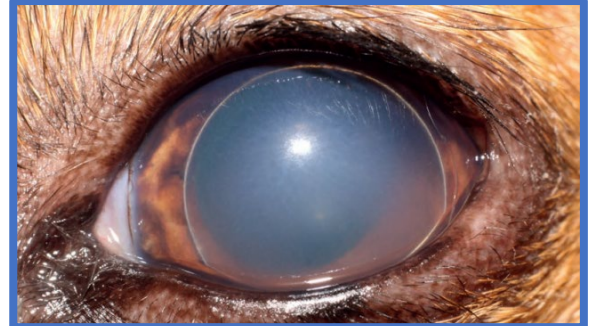
Yes, primary lens luxation normally affects both eyes, however both lenses may not be completely displaced at the time of diagnosis. Secondary lens luxation may involve one or both eyes, depending on the nature of the underlying disease.

## What treatment options do I have?

Even though medical treatment is necessary to control the pressure and inflammation in the eye, lens luxation generally requires surgery. Several different techniques are available to remove the lens. The procedure is demanding and involves intensive post-operative care, however surgery provides the best overall prognosis to maintain vision and the eye.

## What happens if I do nothing?

If left untreated, lens luxation usually results in elevation of the pressure in the eye (glaucoma), resulting in loss of vision and loss of the eye.



## Are any breeds predisposed?

**Primary lens luxation** – Terrier breeds, Terrier cross breeds, Tibetan Terriers, Shar Peis etc. *Genetic tests to identify genetic disposition are available for certain breeds.*

**Secondary lens luxation** – may occur in any breed

