

This factsheet has been prepared to help you understand keratoconjunctivitis sicca. Whilst it is hoped this factsheet addresses many concerns you may have, please contact us if you have any further questions regarding the condition.

What is keratoconjunctivitis sicca?

Keratoconjunctivitis sicca is the term used for insufficient tear production. The common name is 'Dry Eye'



Why does it matter if my pet has insufficient tear productions?

The tear film has several very important functions, such as providing the surface of the eye with oxygen and nutrients, lubricating the surface of the eye and fighting infections on the surface of the eye. If the tear film is lacking, your pet will be predisposed to the development of diseases of the surface of the eye (cornea), not to mention the discomfort it causes.

What causes this disease?

There are several causes of dry eye disease, including:

- problems with the glands producing the tear film
- hormonal imbalances
- reactions to certain drugs
- immune mediated causes (abnormal behaviour or the body's own defence mechanisms)



Can both eyes be affected?

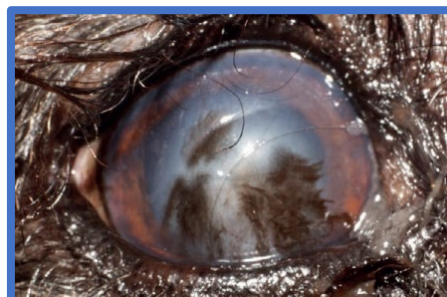
Yes, both eyes are normally affected.

What treatment options do I have?

Most cases respond well to medical treatment, which is usually a combination of tear stimulating and tear replacement medications. In some cases, anti-inflammatory and antibiotic drugs are required. Most cases require life-long treatment to some degree. Cases which don't respond to medical treatment may require surgery which provide constant lubrication to the surface of the eye. Surgery includes redirecting saliva from the mouth to the lower eyelid. Although saliva does not have the same quality as tear film, it does provide instant moisture to the surface of the eye, relieving signs of discomfort.

What happens if I do nothing?

If left untreated, dry eye will cause constant discomfort and ultimately result in corneal ulcers, which may result in loss of vision or loss of the eye. Humans suffering with dry eye disease report severe discomfort, so we can only assume your pet feels the same.



Are any breeds predisposed?

Cavalier King Charles Spaniels, English Bulldogs, Lhasa Apsos, Shih Tzus, West Highland White Terriers & Pugs