

Rowe Referrals

The Veterinary Hospital

Bradley House, Ferndene

Bristol, BS32 9DT

Telephone 01454 521000

Fax 01454 521001

referrals@rowevetgroup.com

www.rowereferrals.co.uk

The Eye Clinic

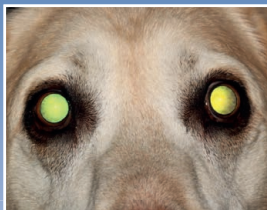
eyeclinic@rowevetgroup.com

eyes@rowevetgroup.com

Rowe

Referrals

Glaucoma



 Find us on
Facebook

www.facebook.com/roweeyeclinic

www.facebook.com/roweveterinaryreferrals



Glaucoma

What is Glaucoma?

Glaucoma is a term we use to describe conditions associated with increased pressure in the eye.

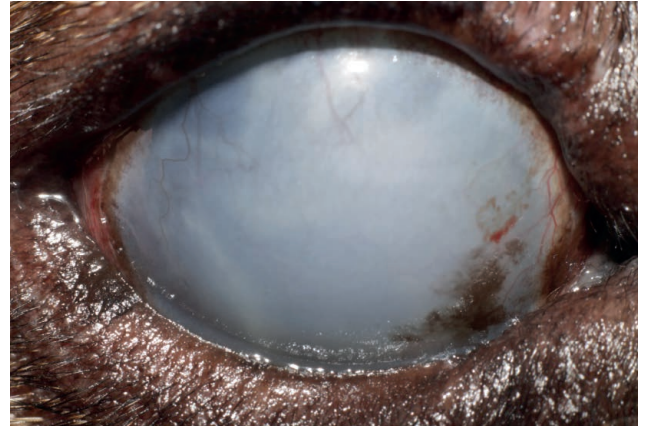


Why does it occur?

There are several reasons for the development of glaucoma. In general, glaucoma is caused by an imbalance between fluid production and drainage in the eye. We try to differentiate primary glaucoma from secondary glaucoma. Primary glaucoma is typically caused by genetic factors/developmental factors. Secondary glaucoma is caused by other underlying conditions such as chronic inflammation in the eye (uveitis), an intraocular mass or displacement of the lens.

Can both eyes be affected?

Yes, especially in cases of primary glaucoma, we expect both eyes to be involved. Usually there is a time delay between the onset of the disease in both eyes.



Are any breeds predisposed?

Secondary glaucoma can affect any breed of dog or cat. In cases of primary glaucoma, there is a predisposition in certain breeds (including the American Cocker Spaniel, English Cocker Spaniel, English Springer Spaniel, Bassett Hound, Shar Pei and Chow Chow).

What treatment options do I have?

Treatment options in the early stages of glaucoma involve various eye drops to either reduce fluid production or increase fluid drainage. However, in most cases medical treatment may not be successful. Therefore various surgical methods can be used to control normal pressure in the eye. Surgical methods aim to destroy the fluid producing structures in the eye. However, despite best efforts to optimize medical and surgical treatments for glaucoma, the long-term prognosis for vision remains guarded.

What happens if I do nothing?

If left untreated, both primary and secondary glaucoma will ultimately result in permanent loss of vision and possible loss of the eye. We know that glaucoma can cause severe migraine type headaches in humans, so it is likely to be similar in animals.

If you have any further questions regarding this or any other condition feel free to contact us.