

# Rowe Referrals

The Veterinary Hospital

Bradley House, Ferndene

Bristol, BS32 9DT

Telephone 01454 521000

Fax 01454 521001

referrals@rowevetgroup.com

www.rowereferrals.co.uk

## *The Eye Clinic*

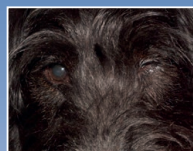
eyeclinic@rowevetgroup.com

eyes@rowevetgroup.com

# Rowe

Referrals

## *Ectopic Cilia*



 Find us on  
**Facebook**

[www.facebook.com/roweeyeclinic](http://www.facebook.com/roweeyeclinic)

[www.facebook.com/roweveterinaryreferrals](http://www.facebook.com/roweveterinaryreferrals)



# Ectopic Cilia

## ***What are ectopic cilia?***

Ectopic cilia are abnormal hairs which emerge through the inside of the eyelid, causing irritation and in some cases ulceration of the surface of the eye. The condition usually affects young dogs.



## ***Which signs may indicate presence of ectopic cilia?***

Clinical signs associated with the condition, usually include non-healing corneal ulcers and chronic irritation of the eye.

## ***Can both eyes be affected?***

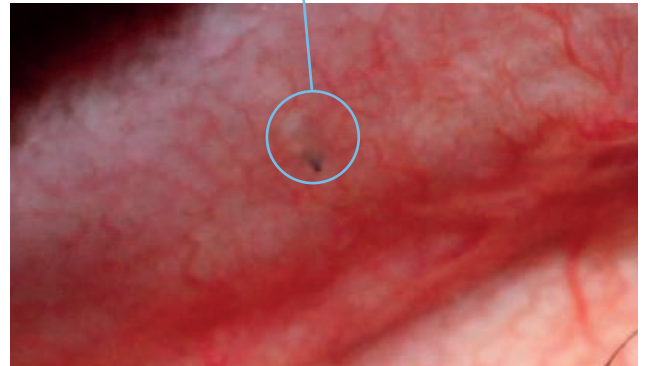
Yes, and ectopic cilia are commonly associated with the presence of distichia (for further information please see the information sheet on Distichiasis).

## ***Are any breeds predisposed?***

Yes, ectopic cilia are commonly seen in Flat-Coated Retrievers, Pekingese, Shih Tzu, Cavalier King Charles Spaniel, Boxer, English Bulldog, Poodle and Jack Russell Terrier. However any dog breed may be affected.

## ***What treatment options do I have?***

Our usual treatment is to surgically remove the root of each abnormal hair using the high magnification provided by the operating microscope. Mere plucking of the ectopic cilia is not a permanent solution and may exacerbate the condition if the hair is torn off at the base.



## ***What happens if I do nothing?***

If ectopic cilia are not removed, severe damage to the ocular surface (cornea) may ensue, resulting in deterioration of vision and in some cases loss of the eye.

***If you have any further questions regarding this or any other condition feel free to contact us.***