



Lowesmoor News

The newsletter for Lowesmoor House Vets



Issue 1,
Winter
2016



Welcome to our Newsletter!

Welcome to the first edition of our newsletter. We will be releasing an edition quarterly to keep you informed of all the best advice throughout the year and to keep you informed of developments in the practice.

Antifreeze poisoning in cats

Antifreeze, otherwise known as 'ethylene glycol' is particularly toxic to cats and can prove fatal if ingested. Figures from The Veterinary Poisons Information Service, which offers vets specialist advice about poisoned pets, reveal the most common cause of death in more than 200,000 animals on its database is ethylene glycol poisoning. The figures also show that 90% of cats that swallow anti-freeze will die as a result.

Most of us have antifreeze to hand in the winter months ready to de-ice our cars following an overnight frost, whilst others use it to stop garden water features freezing. However, most people are unaware of the danger to cats from antifreeze poisoning, and that ingesting even a small quantity can cause death. When it's cold, cats can look for shelter in sheds and garages, which is where many of us store our bottles of antifreeze. The scent of antifreeze is enticing to cats so any spills or leaks will be tempting for a cat. We're urging people to keep their antifreeze out of cats' reach, clean up any spillages immediately, not to use in garden features accessible by cats and to dispose of antifreeze and water coolant safely & responsibly.

Common symptoms:

Up to 12 hours after ingestion

Cat is vomiting, appearing 'drunk', wobbly, may be more 'vocal'.

12-24 hours after ingestion

Cat is exhibiting signs of depression, increased heart rate, usually at this point the kidneys begin to struggle to cope.

After 24 hours

Cat may drink more, it will be lethargic, vomiting and have a painful abdomen. Acute renal failure is likely and unfortunately the prognosis at this point is very poor.

As you see, cats will quickly deteriorate after ingestion of antifreeze therefore if you suspect your cat has consumed antifreeze, or is showing any of the above symptoms then contact us ASAP.



Fleas a crowd

With our wet summers and mild winters providing an excellent environment for fleas to thrive it's hardly surprising that there has been an increase in the number of clients reporting a surge in flea incidences.



What can you do to combat this nuisance?

Treat all pets in the household with an approved flea product (such as Advocate or Bravecto). Ensure that you read the instructions carefully - we are happy to go through any concerns or worries you may have on administering treatment. Remember to weigh your pet before ordering flea treatment to ensure you have the correct dosage.

- Steam clean (not shampoo) carpets and upholstery to kill pre-adult flea stages and launder bedding, blankets, pillows and throws regularly. Vacuum frequently.

Use a household flea spray such as R.I.P Fleas which will last up to 12 months. It's worth keeping in mind that infestations have to be regularly re-treated to prevent a return of the creatures as flea eggs can last 12 months before they hatch..

Focus on.... Cushing's Syndrome

This rather chilled cutie to the right is Coco. Earlier this year she was diagnosed with Cushing's syndrome.

What is Cushing's syndrome?

Dogs (like Coco) who have Cushing's syndrome will produce excessive amounts of a hormone called cortisol. Cortisol helps Coco to respond to stress, fight infections and regulate the body's metabolism; but too much or too little of it can cause problems.

What are the symptoms?

In many cases the clinical signs will often be subtle and occur gradually. Many of the symptoms can appear like the normal aging process, therefore can often be overlooked.

- Drinking more
- Frequent urination with possible incontinence
- Large appetite
- Pot belly
- Excessive panting
- Muscle wastage
- Hair loss & thinning skin

What causes Cushings?

Cushings will usually occur as a result of a benign tumour. In 85% of cases this is caused by a benign tumour of the pituitary gland. The tumour cells produce too much ACTH, which in turn stimulates the adrenal glands to overproduce cortisol. The other cause of Cushings (around 15% of cases) is a tumour in one of the adrenal glands, which then produces excessive amounts of cortisol. This results in the development of a combination of clinical signs that are associated with Cushings.

Diagnosis

There's no method that's 100% accurate for diagnosing Cushing's, so the vet will normally have to carry out a few tests to see what may be causing your pet's symptoms and to rule out other health problems. With Coco this involved testing her blood and urine as well as carrying out a hormone screening test called an ACTH stimulation test. This test is relatively simple with the vet taking an initial blood test to check cortisol levels. A synthetic version of the hormone, ACTH which encourages the adrenal glands to produce cortisol is then injected. An hour later a second blood sample is taken to measure the response of the adrenal gland. In Cushings the results will show high levels of cortisol in the blood.

Outlook

If left untreated your dog may develop other serious conditions which will weaken its body and require further treatment such as diabetes, blood clots in the lungs, kidney infection, urinary tract infection and inflammation of the pancreas.

Cushings is not curable but it is controllable through the administration of long-term medication. Coco is doing really well thanks to regular follow up appointments and routine blood tests to ensure she continues to receive the correct dosage of medication.



Opening times:

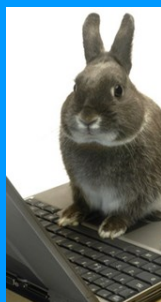
Mon - Fri 8:30am - 7pm

Sat 9am - 12pm

Consultations by appointment only.

**18 Rainbow Hill,
Worcester, WR3 8LX
01905 723361**

For regular updates and info visit our website at www.lowesmoorvets.co.uk



- **Has your pet got too portly?**
- **Need help crunching those kilos?**

We have a weight loss clinic to help your pet become slimmer, trimmer, happier and healthier!!

Please call and speak to Chris or Tara on 01905 723361

