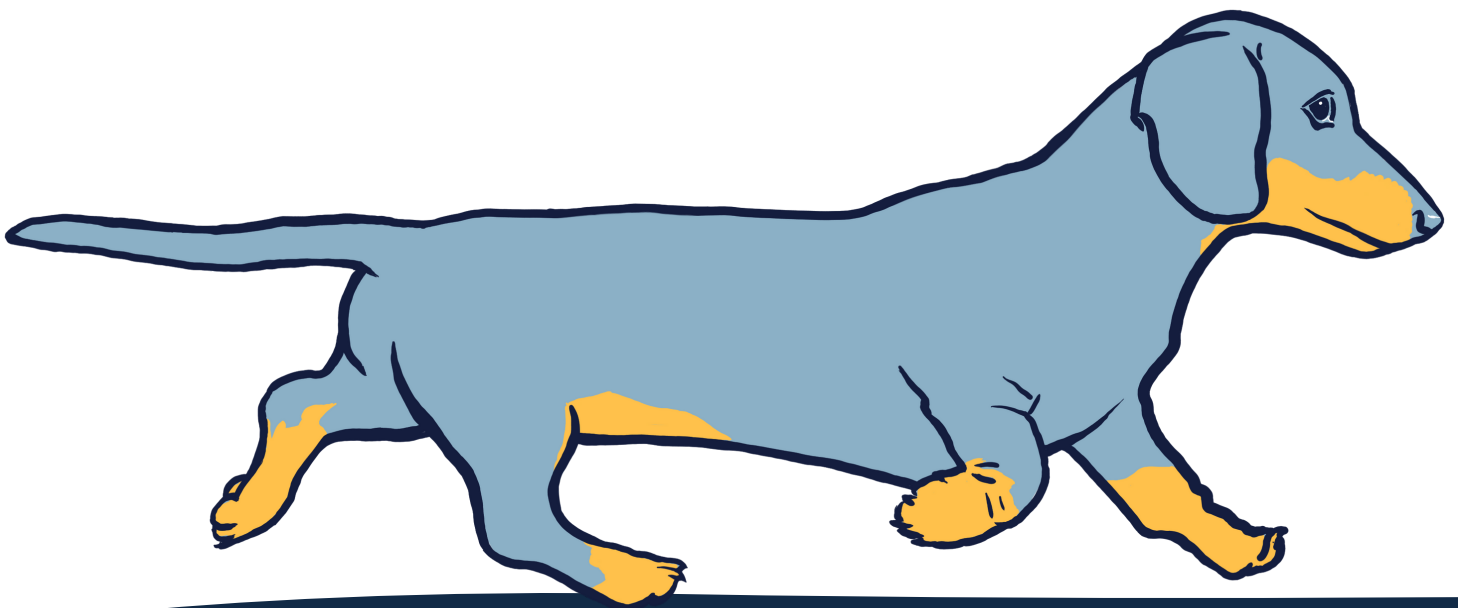




hamilton
SPECIALIST REFERRALS

A MINI GUIDE TO



IVDD

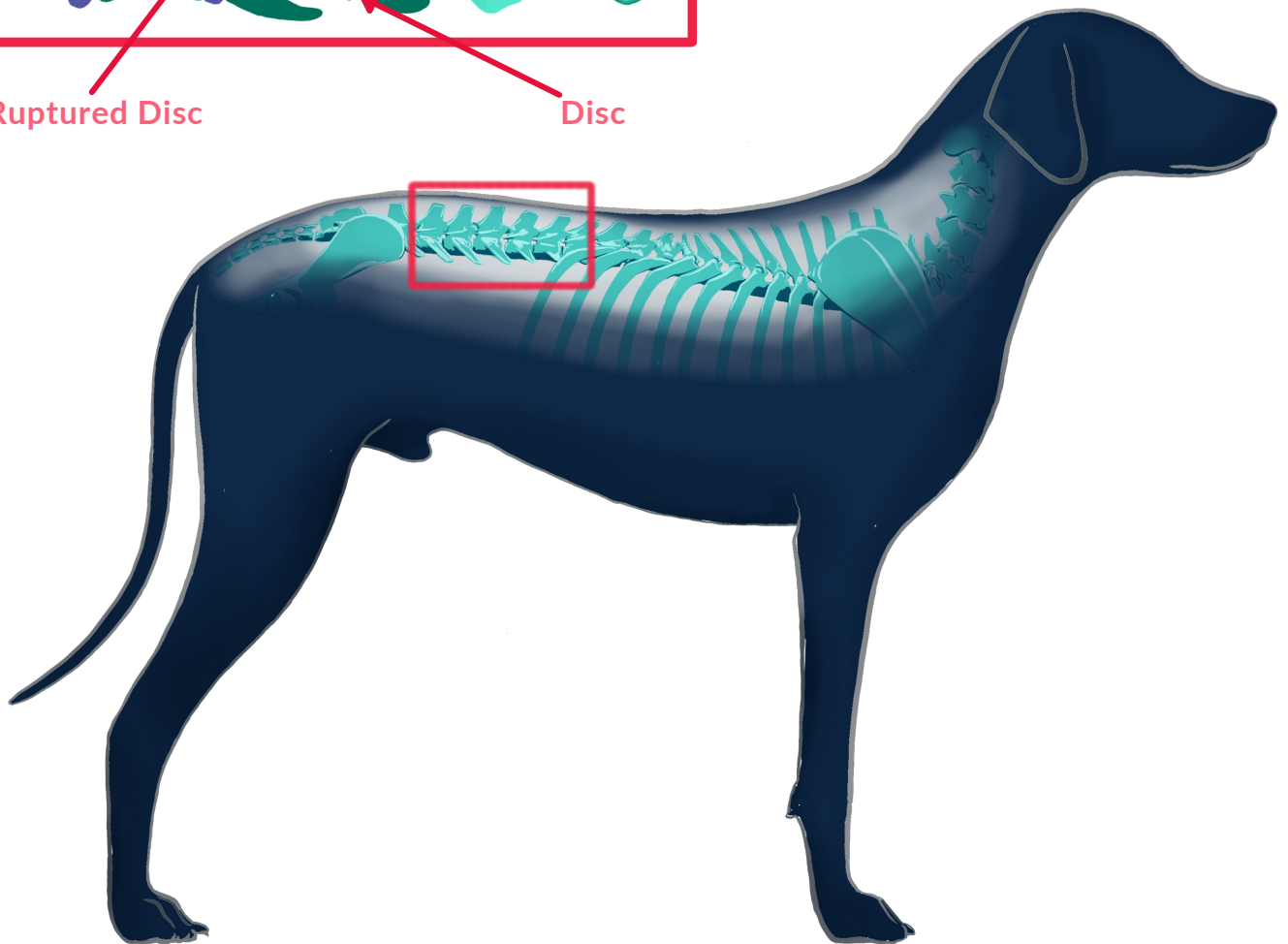
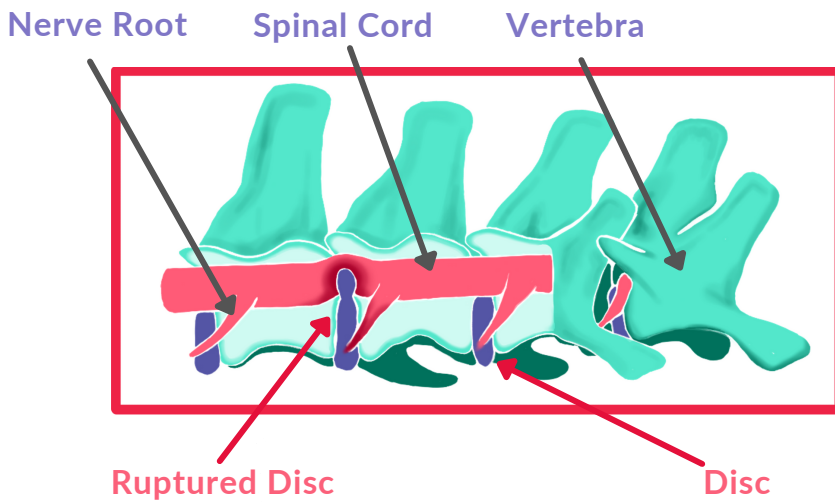




— Overview —

IVDD (**intervertebral disc disease**) is a slipped or ruptured disc between vertebrae

The rupture puts pressure on the **spinal cord**, which can cause pain, weakness and occasionally immobility

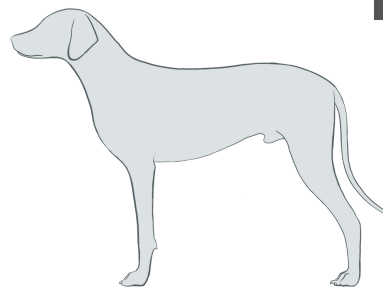
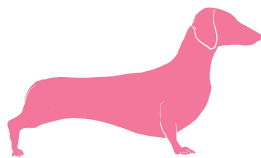
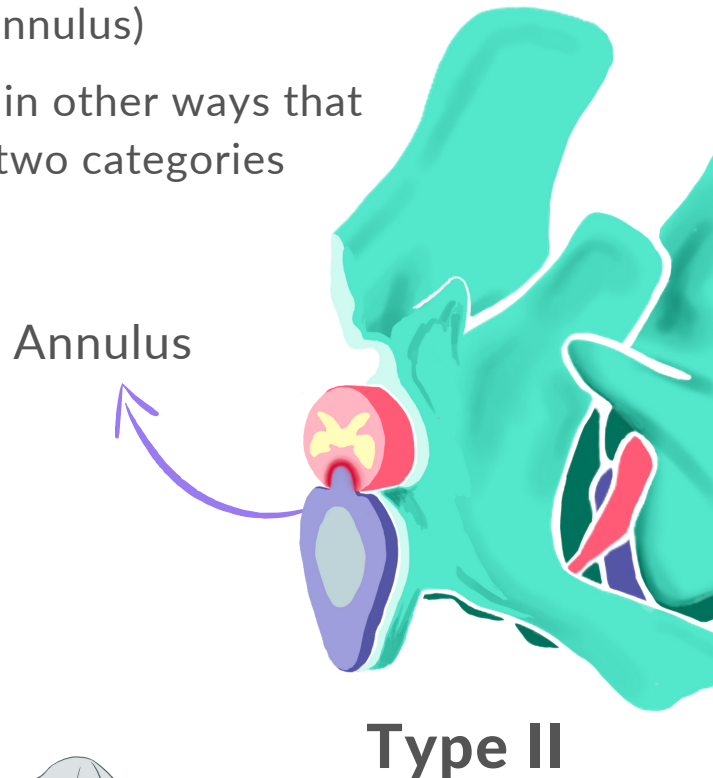
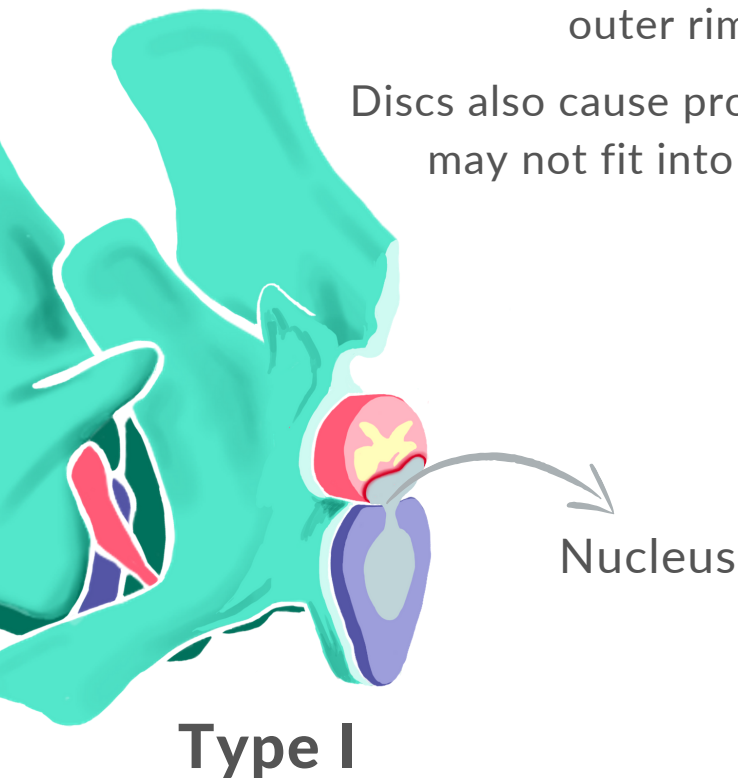




— Types —

Disc problems are often classified as either Type I or II. Type I disc disease involves extrusion of the central part of the disc (the nucleus) whereas Type II represents protrusion of the outer rim (the annulus)

Discs also cause problems in other ways that may not fit into these two categories



Affects smaller breeds, often with short legs

- **Dachshunds**
- **French bulldogs**
- **Shih Tzus**

Onset:

- Most often acute (sudden)

Affects larger breeds such as:

- **Labradors**
- **German Shepherds**
- **Staffordshire Bull Terriers**

Onset:

- Chronic (progressive) or acute





— Symptoms —

Symptoms can appear gradually or suddenly, including:

Reduced limb reflexes

Loss of pain sensation to one or more limbs

Hind limb weakness (ataxia)

Paralysis

Neck pain

Back pain

Shaking

Random crying out in pain

Head held down

Contact your vet if you notice any of these symptoms

