



ARDENE HOUSE

VET PRACTICE LTD

Farm Newsletter Special
Edition: Flock Health Club

Tel: 01224 740700



Flock Health Club

Ardene House is proud to offer membership to our Flock Health Club to any and all clients with sheep, no matter if you have 1 sheep or 1000! By joining, you will get discounted benefits to maximize the health of your flock.

For a single annual fee, benefits included with 2020 membership are:

- **Faecal worm egg counts + liver fluke faecal analysis**

- 2 pre-dosing and 2 post-dosing pooled samples, for a total of up to 4 tests

- 10 faecal pots per test included

- **Reduced visit fees for blood sampling for trace minerals** (lab fee not included)

- **Sheep CT scanning: scan 1, get 1 free**

If you are interested in joining or have any queries, please phone 01224 740700 and ask to speak with Rebecca or Marta.



In this issue:

- Flock Health Club
- Sheep CT Scanning

Check out news on our website and let us know what you think.

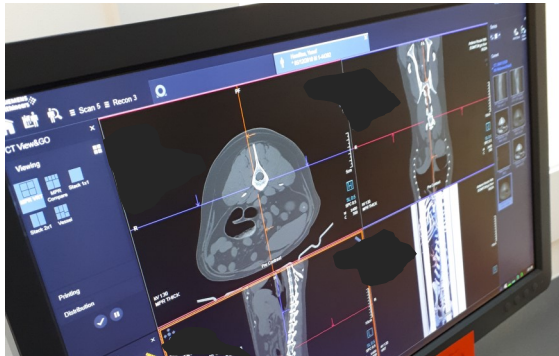
www.ardenehouse.co.uk

If you would like to receive our quarterly newsletters by email please send us a message via the contacts page on our website.

**24 Hour
Emergency
Service
01224 740700**

Sheep CT Scanning

CT scanning (computed tomography) is a medical imaging technique which produces cross-section



images of a body using low dose X-rays, without harming it. The detailed images produced allow very accurate estimation of body composition and tissue distribution.

A high proportion of the lambs produced in Britain fail to meet target fat and conformation grades. The wider use of performance recording and selective breeding in sheep, together with the use of new technologies such as CT scanning, could have a major impact on solving this problem.

CT scanning can also be used in sheep and goats for diagnostic purposes (congenital abnormalities), pelvic measurements etc.

How it is done

Sheep are mildly sedated before they are strapped into a cradle on the scanning unit.

The animal passes through a gantry while it's spinning around it and sending low dose x-rays while detectors measure the absorption of those rays. Fat, muscle and bone appear on the scans in different shades of grey. This data is created into a pile of cross-section images through the full body.



The scanning process, which measures the weight of muscle and fat across the whole carcass, takes less than a few minutes.

How we can use the data

A particular interest for measuring commercial traits places are the back of the pelvis, the 5th lumbar vertebrae and the 8th rib.

Measurements from these images enable accurate predictions of carcass tissue weights (for fat muscle and bone) or additional information, such as a number of vertebrae. CT scan data predicts to an accuracy of 96-98% the carcass tissue weights and percentages in the

animal, the killing out percentage, the muscle to bone ratio, the muscle to fat ratio, gigot shape and eye muscle area.

This data, which provides overall potential measurements, allows breeders and farmers to identify the very best sheep with the best genetics for breeding. All the data provides the opportunity for a good match between tups and ewes.

We can process all that data in house and discuss them with the client. Breeders and farmers can look at the figures and choose a tup or ewe that is strong in values, whether they want to dilute or increase a specific trait. The information is presented in a form that can be easily inputted into their own performance recording. We can also send animal files to any database, on client requests, like national genetic evaluations and estimated breeding values (EBVs).

What are the benefits

CT data and images offer a valuable way to support the promotion of recorded rams at sales.

The farmer can identify sires that will leave lambs with better conformation and optimal fat levels. These lambs will achieve better grades at slaughter and will, therefore, be more valuable to finishers or abattoirs.

When scanning is done

Usually, most scans are done in the springtime. However, we currently have to postpone our scanning until COVID-19 restrictions are lifted, which we hope will be soon.