

IS A KIDNEY CONDITION HIDING INSIDE?

Signs of kidney problems aren't always obvious. You can help support your cat's kidney function by following 3 simple steps: regular check-ups with your vet, catch any problems early and support your cat with specialised nutrition.



VETERINARY
CLINICAL
NUTRITION

isfm

international society of
feline medicine

PURINA **PRO PLAN** VETERINARY DIETS

REGULAR VET
CHECK-UPS

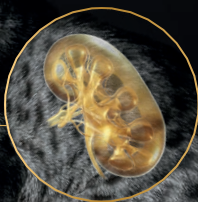
1

CATCH IT
EARLY

2

SUPPORT WITH
SPECIALISED
NUTRITION

3



NEW



 **PURINA**

Your Pet, Our Passion.

Taking care of your cat's kidney health is critical, especially as they get older.

You can help support your cat's kidney function by following **3 simple steps**:

1 REGULAR VET CHECK-UPS



If your cat is **over 7 years of age**, we strongly recommend bringing them to the vet **at least once a year** for a health check-up.

2 CATCH IT EARLY



Did you know that signs of kidney problems don't typically appear until almost **2/3 of a cat's kidney function is compromised**?

3 SUPPORT WITH SPECIALISED NUTRITION



Veterinary diets, specifically formulated for cats with kidney conditions, can help slow progression of the condition, increase survival and improve quality of life.

With appropriate treatment and the right nutrition, you can help support your cat's kidney function.



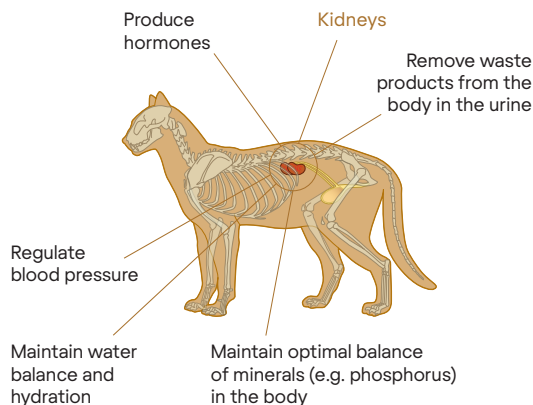
Understanding your cat's kidney condition

Being told that your cat has chronic kidney disease (also called chronic renal insufficiency) is likely to have been upsetting for you. However, be reassured that with appropriate care, and commitment from you, you can really help your cat enjoy the best possible quality of life. This leaflet will help you understand your cat's condition, and how feeding a diet specifically designed for cats with chronic renal insufficiency, formulated to support kidney function and slow down disease progression is one of the most important strategies that can help manage your cat's condition and make him/her feel better.

Why are the kidneys so important?

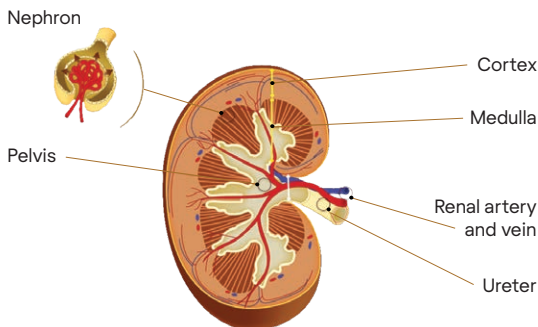
Cats, just like us, have two kidneys located in the abdomen under the spine.

Your cat's kidneys perform a number of vital functions:



Most processes occur in nephrons, tiny filtering units inside the kidneys. A healthy kidney contains hundreds of thousands of nephrons. They may be lost with age and disease and cannot be replaced. However, clinical signs of disease will not develop until a cat has lost about 2/3 of its total kidney function.

Chronic kidney disease in cats



Anatomy of the kidney

In chronic kidney disease (CKD) the kidneys progressively lose their ability to function properly over a period of months to years. It is one of the most common causes of ill health in older cats. Unfortunately, it is irreversible but appropriate management can help slow down disease progression.

What causes CKD in cats?

By the time clinical signs of CKD develop, it is often impossible to know what caused the initial damage. A variety of factors may damage the kidneys (e.g. infections, inflammatory conditions, high blood pressure), but in many cases the initial cause of damage cannot be identified. Disease tends to progress in a similar way regardless of the initial cause. Unfortunately in the majority of cases, there is nothing that either you or your vet could have done to prevent your cat developing CKD.

What are the signs of CKD?

As kidney disease progresses, the kidneys no longer work well to remove waste products from the body and these start to build up, which can cause various signs. Your cat also loses the ability to concentrate urine and starts producing larger volumes of urine and drinking more to compensate. Increased thirst can be an early sign of CKD and should always be investigated by your vet.

Your cat may show a variety of signs relating to CKD:

- Drinking more
- Urinating more (for example, more frequent trips to the litter tray)
- Loss of appetite
- Weight loss and lethargy
- Unpleasant breath odour

The earlier the disease is identified, the more effective management is likely to be to slow down disease progression and maximise your cat's quality of life.

How is CKD diagnosed?

Your vet will give your cat a thorough physical examination and discuss with you any changes you have noted. Blood and urine tests are usually performed to investigate and confirm the presence of CKD, determine its severity, and evaluate what complications may be present. Your vet may also recommend imaging to look at the structure of the kidneys and recommend that your cat's blood pressure is checked, as a high blood pressure can be relatively common in cats with CKD but is treatable if it can be identified.

How is the condition treated?

The treatment your vet recommends will depend on the severity of the disease and specific signs and complications present in your cat. The main objective of the treatment is to slow the progression of the disease and minimise the symptoms so that your cat maintains a good quality of life. The most important element of management is feeding your cat a diet designed to support cats with chronic renal insufficiency.

Different medications may be needed according to the stage (severity) of the disease and the complications that arise. Some cats may suffer from anaemia or high blood pressure as a result of their kidney disease. In these cases, your vet will prescribe medication to help your cat feel better. Your vet will discuss what treatments your cat may benefit from with you. After diagnosis, it is also important to have your cat checked regularly by your vet, and to adjust treatments as needed at each check-up.

The right diet is very important

An appropriate diet is important in helping to manage the disease, to slow its progression and to help your cat maintain a good quality of life. Reducing dietary phosphorus is key to help slow the progression of chronic renal insufficiency. Restricting the level of protein, but ensuring this is of high digestibility also helps improve the quality of life of cats with kidney disease – it helps minimise some clinical signs (e.g. nausea and reduced appetite as a result of toxin formation), whilst still providing energy and helping maintain healthy muscles, organs and immune function. Feeding a specific diet designed for cats with kidney conditions may help to increase your cat's life expectancy by up to a year¹, and is a really important part of management.

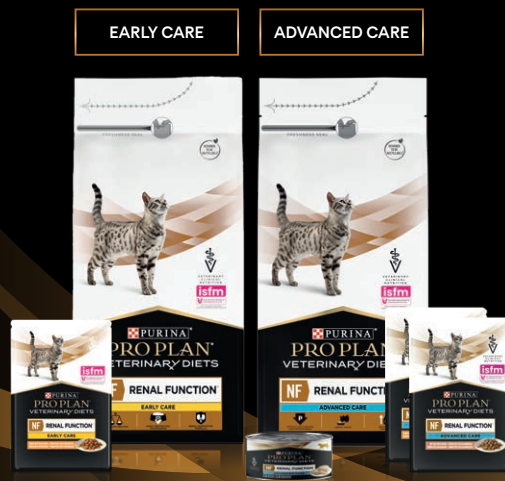
However, any diet is useless if the cat will not eat it. PURINA® PRO PLAN® VETERINARY DIETS NF Renal Function™ Early Care and Advanced Care products are highly palatable to ensure your cat will eat and enjoy them despite a reduced appetite.

1. Elliott J *et al* (2000) Survival of cats with naturally occurring chronic renal failure: effect of dietary management. *Journal of Small Animal Practice*; 41. 235-242

At PRO PLAN®, we are dedicated to providing nutritional support to cats with kidney conditions.

Introducing PRO PLAN® Veterinary Diets NF Renal Function™

- A new range of complete dietetic pet food for adult cats, with **two distinct formulations for the early and advanced stages** of chronic renal (kidney) insufficiency, to help slow down progression of the condition, increase survival and improve quality of life. Available in dry and wet formulations.
- All products are specially formulated with **great taste** and **specifically adapted levels of different key nutrients** to meet your cat's nutritional requirements at any stage of their kidney condition.
- **High quality ingredients and a variety of flavours and textures** help ensure a great taste that your cat will love.

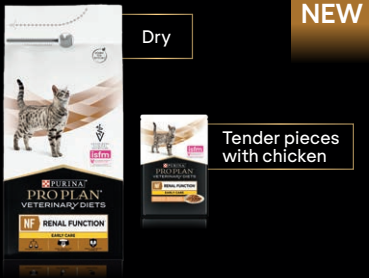


Ask your vet which diet is the most appropriate for your cat, depending on the stage of their kidney condition.

PRO PLAN® Veterinary Diets NF Renal Function™ Early Care




For
EARLY STAGES
of CHRONIC
KIDNEY
INSUFFICIENCY

IRIS
STAGES
1 & 2



Key Benefits

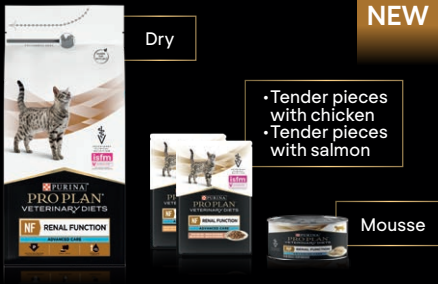
NEW FORMULA

-  Moderate amount of high quality protein to help support kidney function from the early stages of chronic kidney insufficiency and help maintain an adequate muscle mass
-  Restricted level of phosphorus to help slow progression of chronic kidney insufficiency from the early stages
-  With restricted phosphorus levels and added omega 3 fatty acids, potassium and antioxidants to help support kidney function

PRO PLAN® Veterinary Diets NF Renal Function™ Advanced Care




For
ADVANCED
STAGES
of CHRONIC KIDNEY
INSUFFICIENCY

IRIS
STAGES
3 & 4



Key Benefits

NEW ADVANCED CARE FORMULA

-  Restricted but high quality proteins to help minimise loss of muscle and toxin formation and restricted phosphorus to help slow the progression of chronic kidney insufficiency
-  Increased levels of omega-3 fatty acids: with EPA and DHA to help support kidneys in the advanced stages of kidney insufficiency
-  Great taste to satisfy cats with reduced appetite

Feeding guidelines for FELINE NF Renal Function™ Early Care and Advanced Care

A gradual transition to the new diet may be helpful in cats with CKD. However, if your cat continues to have a poor appetite, they should be reassessed by a vet to ensure other complications are not present. There are a number of considerations which may also help with a successful transition across to the new NF diet:

- Choose the diet your cat is most likely to accept. Feeding wet food can help increase overall water consumption, which is helpful given cats with CKD can easily become dehydrated, but if your cat only eats dry food then try this first. If your cat prefers wet food, consider texture.
- Introduce the diet in a non-stressful environment, in a quiet area at home, away from other pets, loud noises, or any litter trays.
- Ensure your cat has their own food bowl (cats don't like to share!)
- Don't stand over your cat – most cats prefer time and space to accept their new food.
- Introduce the diet in a new bowl (next to a bowl with the old food). Gradually increase the amount of new food offered and reduce the amount of the old food over time.
- Avoid food aversions by administering any medications in a different, highly palatable food, at a separate time to the cat's main meal.
- Gentle heating of wet food might help increase the aroma and tempt cats to eat.
- Locate food bowls away from water bowls or litter trays, and consider their height: if your cat suffers from osteoarthritis, slight elevation of the food bowl off the floor might increase comfort when eating.
- Palatability enhancers may be helpful e.g. PURINA® PRO PLAN® Fortiflora® (a probiotic supplement which many cats also find highly palatable).

If your cat is already being fed PPVD NF Renal Function™, please speak to your vet to help advise which product you should move to (Early Care or Advanced Care). Your vet will be able to advise the stage of their kidney condition, and therefore which diet will best support them.

PURINA® PRO PLAN®: a name you can trust

PURINA® PRO PLAN® VETERINARY DIETS are backed by strong science, with the latest nutritional findings applied to bring you some of the most innovative and effective formulas.

With PURINA® PRO PLAN® VETERINARY DIETS NF Renal Function™ wet and dry formulas you can be confident that your cat will benefit from a diet that provides optimum nutrition whilst also helping support their kidney function.



Please note that all indications for PURINA® PRO PLAN® Veterinary Diets mentioned in this brochure are for the dietary support of the cat with the listed condition and do not preclude appropriate medical management. The veterinary diets should be used under the supervision of your vet.

Providing the right level of hydration is key to help support the kidneys

Dehydration can be a common complication in cats with a kidney condition and can lead to weakness, loss of appetite and constipation.

You can help provide the right level of hydration to your cat with PRO PLAN® Hydra Care™

PRO PLAN® Hydra Care™ is a complementary pet food that can be supplemented along with the PRO PLAN® Veterinary Diets NF Renal Function™ diets to help increase your cat's daily water intake and support their hydration.

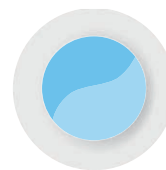


*For each 2kg of body weight

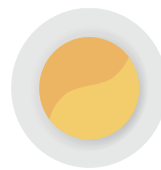
It's a soft textured jelly, served on its own in an extra third bowl, that encourages cats to happily lick it up due to its great taste.



PRO PLAN®
Veterinary Diets
NF Renal Function™



Fresh Water



PRO PLAN®
Hydra Care™



PURINA®

PRO PLAN®

VETERINARY DIETS



PRO PLAN® Veterinary Diets NF Renal Function™

Nutritional support for your cat, from the early stages into the more advanced stages of kidney conditions.

PURINA®

**PetCareteam**

For advice on any aspect of pet care, **just ask our experts**

UK: 0800 212 161 RO: 1800 509 368

Monday-Friday 8am-6pm. Or contact us online at
www.purina.co.uk | www.purina.ie

For more information, please speak to your vet
or contact Nestlé Purina.

®Reg. Trademark of Société des Produits Nestlé S.A.